

SUNNYBANK STATE HIGH SCHOOL



WHOLE SCHOOL CURRICULUM FRAMEWORK 2015

Sunnybank State High is a student centred learning community, with a commitment to achieving high levels of student achievement, the goals of Education Queensland and our local school community. Our school vision, “many ways to excellence” reflects this focus.

“Every student is capable of learning and is expected to demonstrate ongoing progress.”

(The Roadmap for Curriculum, Teaching, Assessment and Reporting in Year 1-9” page 2)

To support this focus we maintain:

- A school governance structure/program management structure that supports students across their whole curriculum program, delivering high level achievement in both academic and social outcomes.
- A commitment to developing a range of program offerings to suit student needs including extension and intervention programs.
- A staff professional development program that supports staff to develop skills and expertise enabling best teaching practice and high levels of service provision.
- A well established link with the educators in our nearby primary schools to provide a seamless curriculum that caters to student needs.
- Comprehensive facility renewal programs ensuring our resources support this learning focus.

Underpinning Values

Our values are drawn from the Values for Australian Schooling. Through embedding them into our full curriculum framework they develop student self–esteem, optimism and commitment to personal fulfilment. The three principles of knowing yourself, connecting with others and making a difference in our world provide a framework for ethical judgements and social responsibility.

School Wide Pedagogy

Our school wide pedagogy links individual pedagogical practices with the school community values and vision statement. This provides alignment and a common framework within which all teaching and learning occurs. The school wide pedagogy is designed around the core principles of student-centred learning, high expectations, alignment of curriculum, pedagogy and assessment, evidence-based decision making, targeted and scaffolded instruction and a safe, supportive, connected and inclusive learning environment.

SUNNYBANK STATE HIGH SCHOOL

“Many Ways to Excellence”

WE VALUE:

Achievement

Commitment

Respect

Life long learning

Accountability

THROUGH:

RELEVANCE

- Personal experience
- Practical activities
- Inquiry based learning
- Connecting to communities
- Preparing for the future

STRUCTURE

- Explicit teaching
- Scaffolding learning
- Modelling
- Reflecting and reviewing
- Developing independence

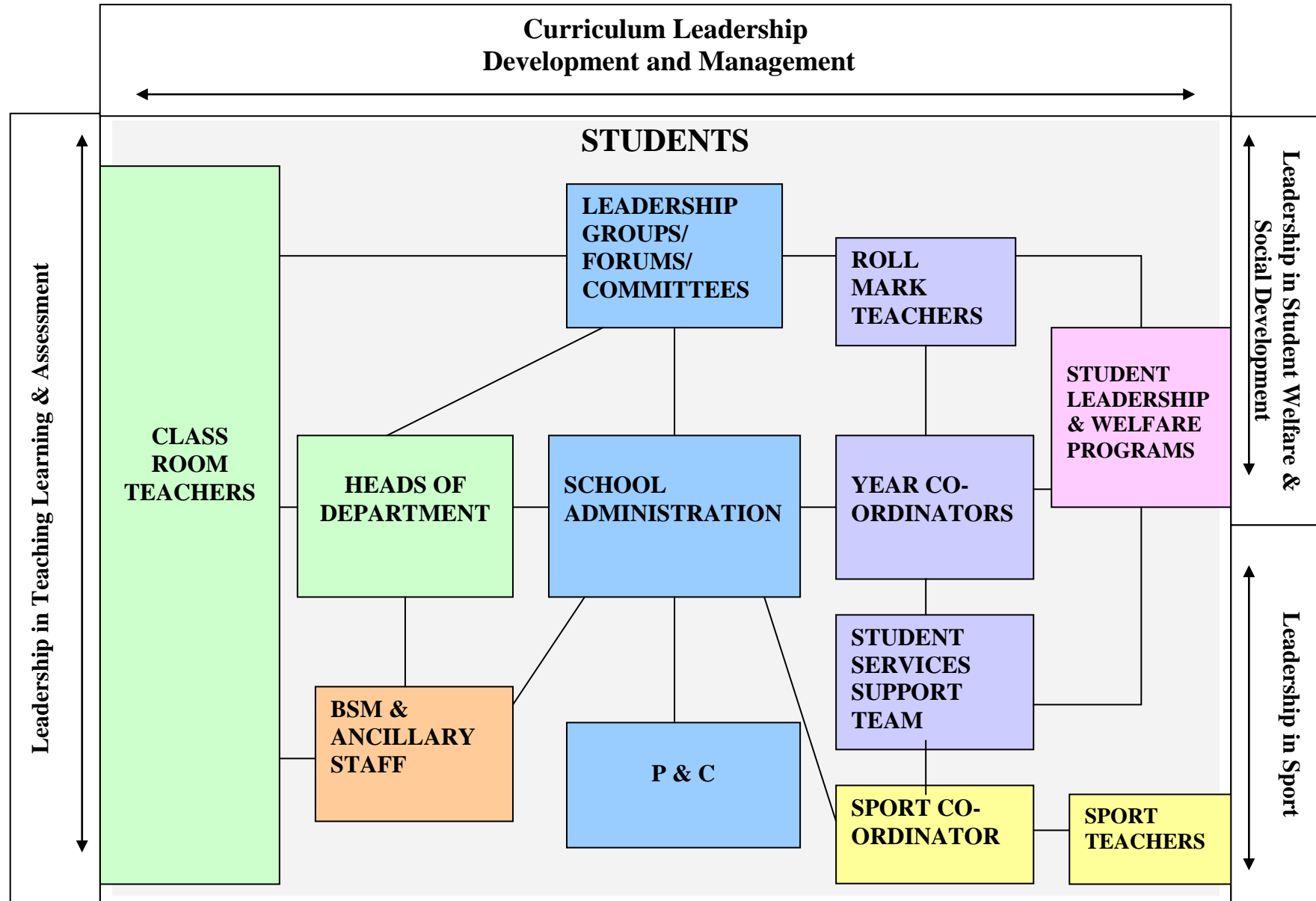
CREATIVITY

- Varying learning experiences
- Catering to different learning styles
- Engaging
- Participating

Structural Overview of the School

The structural overview of the school enables the effective development and management of the curriculum within the school. It provides processes and links for Education Queensland and Sunnybank High school community across human, physical and financial resources to promote a safe and supportive school environment for all. The program management structure of the school is as follows.

Program Management and Structural Overview



Setting Targets

High expectations are set for both teachers and students and efforts are made to acknowledge and celebrate success. Heads of Department and staff work together to investigate student achievement using a range of diagnostic, formative and summative sources. This information forms the basis of professional conversations and development of modifications to the teaching programs. By promoting high expectations of students we establish ambition but realistic goals that promote “many ways to excellence” for every student in our school.

NAPLAN targets

Our school target for 2014 is to achieve upward band movement in **all domains in year 9** with the result that the relative gain of 90% of students is achieved.

NAPLAN domain	Relative Gain 2015
Reading	
Writing	
Spelling	
Grammar & Punctuation	
Numeracy	

Our school target NAPLAN percentage of students in **the upper two bands of each domain in year 9** is as below: (an increase of 4%)

NAPLAN domain	2015
Reading	
Writing	
Spelling	
Grammar & Punctuation	
Numeracy	

SCHOOLWIDE PEDAGOGICAL FRAMEWORK

CURRICULUM

SENIOR SCHOOLING

**SUNNYBANK
STATE HIGH
SCHOOL
IMPROVEMENT
GOALS
2015**

SCHOOL AND COMMUNITY PARTNERSHIPS

DATA

- parent, students, staff

CORPORATE SERVICES

WH&S Plan

Staff Professional Development Plan

Performance and Development Plans -

- ↑

Facilities

Year 12 Outcomes

To improve year 12 outcomes the curriculum offerings are reviewed each year. In year 10, students focus on their career choice through their Studies program. Each student in year 10 is offered the opportunity of work experience and also completes a Student Education and Training Plan in which they outline their career choice, pathway and subjects required to achieve this choice. Subject selection evenings are offered for students and parents. Year 11 reviews occur at the end of each semester and students are supported to select subjects that match their interests and abilities.

Year 12 Outcomes	Focus area	2015
	Percentage of year 12 OP eligible students with OP1-15	
	Percentage retention year 10 to 12	
	Percentage of year 12 students who are completing/completed a SAT or awarded – QCE, VET qualification.	

Indigenous Education

Sunnybank High Schools seeks to close the gap in student attendance between Indigenous and non Indigenous by 2013 through the achievement of the following goals. This will be achieved with targeted tutoring and support for Indigenous students in literacy (Corrective Reading Program) and numeracy (small intensive tutoring classes) and through close relations with Gallang Place staff.

The Curriculum – Overview

The Australian curriculum is being implemented in Geography and has already been implemented in English, Maths, Science and History.. For all other subjects the Essential Learnings and Standards within the **Queensland Curriculum, Assessment and Reporting (QCAR) Framework** are the core learnings for all students in Years 8, 9 and 10. Clearly specified statements of Essential Learnings and Standards from the QCAR Framework are linked to quality assessment instruments.

Essential Learnings describe the focus on teaching and learning in the eight Key Learning Areas organised around the dimensions of:

- Knowledge and Understanding –describing the essential concepts, facts and procedures of the KLA
- Ways of Working – describing the processes and capabilities that students use to develop and demonstrate their knowledge and understanding.

Continuous learning is expected for all students in every classroom.

The **Queensland Studies Authority** syllabi for Authority and Authority registered subjects are the core learnings for students in years 11 and 12. Teachers develop the work programs that correspond to the syllabus documents and they are then approved through QSA processes. Assessment in years 11 and 12 is based upon externally moderated and school based assessment. Student work is matched to syllabus standards and student profiles developed. These folios of student work are moderated by QSA panels at the end of year 11 and verified again at the end of year 12.

Curriculum offerings are reviewed each year and our work programs or Scope of Registration for vocational education is amended accordingly. At present Sunnybank is a Registered Training Organisation and offers the following courses.

Certificate I in:

- Business
- Construction
- Work Preparation (Community Services)
- Sport and Recreation
- Hospitality
- Information, Digital Media and Technology
- Textiles Clothing and Footwear

Certificate II in:

- Business
- Community Services
- Active Volunteering
- Health Support Services (with Business Elective)
- Health Support Services (with Kitchen Operations Electives)
- Sport Coaching
- Tourism
- Information, Digital Media and Technology
- Applied Fashion Design and Technology
- Hospitality (external provider)

Certificate III in :

- Hospitality (external provider)

Curriculum organisation

Classes at Sunnybank High are organised into common age groups operating at each year level. Our curriculum is defined by the Junior and Senior schools, year levels and semesters.

Cross Curricular elements

Literacy strategies are embedded in units of work across all curriculum areas in the Junior School. Subject specific literacy is explicitly taught.

Elements of numeracy are embedded where appropriate in all KLAs Cross curricular numeracy strategies have been explored and professional development offered.

Indigenous perspectives have been embedded in the Essential Learnings. These perspectives acknowledge the viewpoints of Indigenous people on time, place and people within local, regional, national and global contexts.

The school is a member of the **Asian Education Foundation**. Through this association, Sunnybank High aims to improve Asian literacies of knowledge, skills and understandings about the histories, geographies, societies, cultures, literature and languages of the diverse countries of our neighbourhood.

ICTs Staff are continuing to review their pedagogical practices in order to embed technologies into lessons and are undertaking professional development to achieve their IT Certificate.

Co-Curricular Students have access to a wide range of activities which support their classroom activities. We encourage students to participate fully in school life, as research shows that broader student participation supports student achievement and success. Activities include our Instrumental Music program, public speaking programs, student council and musical productions.

Assessment

When planning their units of work, teachers ensure their assessment program within each unit of work:

- Includes a range and balance of assessment instruments that are engaging and motivating
- Provides evidence of student learning of the assessable elements for the KLA within a semester
- Provides a balanced coverage of the assessable elements
- Allows for the collection of evidence of student learning over time
- Includes assessment items to have rubrics or profiles for year level moderation
- Is used to provide feedback to students and teachers about learning.

Teachers are to plan for assessment when they plan their unit of work and use the following processes to develop their assessment

- Identify curriculum intent using the Essential Learnings to select Ways of Working, Knowledge and Understanding
- Identify assessable elements within the KLA that are to be the focus of assessment
- Select the type of assessment instrument that will collect the required evidence
- Develop the assessment instrument
- Develop a guide to making judgements using the assessable elements and descriptors for the KLA

NAPLAN

Sunnybank participates in the point in time, National Assessment Program in Literacy and Numeracy for years 7 and 9. Through embedding literacy and numeracy within KLA programs, students are prepared for the tests. A practice test at the beginning the year identifies areas that may require more intensive work and enables students to experience test conditions and promote good test practices. Test items are revisited in English and Maths classes. Students receive their individual results separate from the KLA and school generated reports.

Reporting

An A-E five point scale report is issued to parents three times each year. This occurs at the end of term 1, semester 1 and semester 2. Report cards also contain information relating to effort and behaviour. Parents are offered the opportunity to meet with teachers during two parent-teacher evenings. Achievement is reported on in Semester 1 and Semester 2. At the completion of year 12, students receive their Senior Education Profile and other certification through QSA.

Homework

High school students will need to spend a regular time each evening doing homework to consolidate and revise the work they have done in class that day, if they wish to complete their course of study successfully. Homework includes:

- work set by the classroom teacher
- individual revision
- long term tasks

The length of time spent on homework is dependent on a student's abilities and will vary.

In years 7, 8 and 9 students develop responsibility for their own learning. Homework in years 7, 8 and 9 could be up to, but generally not more than, 5 hours per week.

In the Senior phase of learning young people should generally be independent learners exercising their own judgement as to the out of hours' time they devote to their studies. Generally homework could range from two hours per night in Year 10 to up to three hours per night for Year 12.

Common Curriculum Elements and Bloom's Taxonomy

BLOOM'S RANKING OF THINKING SKILLS

Remember	Understand	Apply	Analyse	Evaluate	Create
List Name Identify Show Define Recognise Recall State Visualise Describe Retrieve Locate Find	Summarise Explain Interpret Describe Compare Paraphrase Differentiate Demonstrate Classify Exemplify Summarise Infer	Solve Illustrate Calculate Use Interpret Relate Manipulate Apply Modify Implement Carry out Execute	Analyse Organise Deduce Contrast Compare Distinguish Discuss Plan Devise Deconstruct Attribute Outline Structure Integrate	Experiment Support Test Detect Monitor Evaluate Report Write Justify Choose Estimate Judge Defend Criticise Decide	Design Create Compose Devise Recommend Plan Produce Invent Make

COMMON CURRICULUM ELEMENTS AND BLOOMS TAXONOMY
CREATING A THINKING CLASSROOM

BLOOMS	REMEMBER	UNDERSTAND	APPLY	ANALYSE	EVALUATE	CREATE
C O M M O N C U R R I C U L U M E L E M E N T S	<ul style="list-style-type: none"> ◇ Recognis letters, words and other symbols ◇ Recall /remember ◇ Record/note data ◇ Perceive patterns ◇ Visualise ◇ Identify shapes in two and three dimensions ◇ Search and locate items/information ◇ Observe systematically ◇ Gesture 	<ul style="list-style-type: none"> ◇ Interpret the meaning of words or other symbols ◇ Find material in an indexed collection ◇ Interpret the meaning of tables or diagrams or maps or graphs ◇ Interpret the meaning of pictures/illustrations ◇ Summarise /condense written text ◇ Compile lists/statistics ◇ Sette out/present/ arrange/display ◇ Explain to others ◇ Compare/contrast ◇ Classify ◇ Generalise from information ◇ Sketch/draw 	<ul style="list-style-type: none"> ◇ Translate from one form to another ◇ Use correct spelling, punctuation, grammar ◇ Use vocabulary appropriate to a context ◇ Graph ◇ Calculate with or without calculators ◇ Substitute in formulae ◇ Apply strategies to trial and test ideas and procedures ◇ Apply a progression of steps to achieve the required answer ◇ Manipulate/ operate/using equipment 	<ul style="list-style-type: none"> ◇ Compile results in a tabular form ◇ Approximate a numerical value ◇ Structure organising extended written text ◇ Structure/ organising a mathematical argument ◇ Expound a viewpoint ◇ Empathise ◇ Interrelate ideas/themes/issues ◇ Reach\ a conclusion which is necessarily true provided a set of assumptions is true ◇ Insert an intermediate between members of a series ◇ Extrapolate ◇ Analyse 	<ul style="list-style-type: none"> ◇ Estimate numerical magnitude ◇ Reach a conclusion which is consistent with a given set of assumptions ◇ Hypothesise ◇ Synthesise ◇ Criticise ◇ Judge ◇ Evaluate ◇ Justify 	<ul style="list-style-type: none"> ◇ Create ◇ Compose ◇ Devise
	KNOWLEDGE	COMPREHENSION	APPLICATION	ANALYSIS	SYNTHESIS MAKE A DECISION	MAKE BETTER

Junior School: The Years 7, 8 and 9 curriculum is based upon the Australian Curriculum in English, Maths, Science and History and the Key Learning Areas (KLAs) of Health and Physical Education, The Arts, Technology and LOTE. The Junior School concepts of class size, strong teacher relationships and integrated studies are considerations in the planning and teaching within our Junior School. For full details of the Key Learning Areas please refer to the Junior School Subject Handbook.

Curriculum Overview – Junior School

Key Learning Areas	YEAR 7 Subjects	YEAR 8 Subjects	YEAR 9 Subjects
English	English with Corrective Reading	English with Corrective Reading	English with Corrective Reading
Mathematics	Mathematics	Mathematics	Mathematics
Science	Science and Science Extension	Science and Science Extension	Science and Science Extension
Study of Society & the Environment	History Geography	History Geography Study of Society and the Environment	History Geography Study of Society and the Environment
Health & Physical Education	Health & Physical Education	Health & Physical Education	Health & Physical Education (with the opportunity to specialise in Track and Field)
Languages Other than English	Chinese Japanese	Chinese Japanese	Chinese Japanese
The Arts	Integrated approach within the Key Learning Area of The Arts	Subjects on rotation: Visual Art Drama Music	Visual Art Drama Music
Technology	Integrated approach within the Key Learning Area of Technology.	Subjects on rotation: Business Studies/Computer Education Food Studies Textiles Industrial Technology and Design Graphics	Business Studies Information and Communication Technologies Industrial Technology & Design Graphics Food Studies Textiles
English as a Second Language	English as a Second Language	English as a Second Language	English as a Second Language
Special Education Program	Special Education Program	Special Education Program	Special Education Program
Other	Interschool Sport and Social Sport	Interschool Sport and Social Sport	Interschool Sport and Social Sport
	Instrumental Music	Instrumental Music	Instrumental Music
	Focused Literacy	Focused Literacy	Focused Literacy
	Turbo Time (literacy and numeracy enhancement)	Turbo Time (literacy and numeracy enhancement)	

Our school offers intensive an English Language program for newly arrived students with English as a second language. This is in keeping with the P-12 Curriculum, Assessment and Reporting Framework and Policy statement: English as an Additional Language or Dialect.

Year 10: Year 10 is regarded as a transition program from the Junior School leading into the Senior School. In year 10, students begin to consider their Queensland Studies Authority subjects based upon interests and pathways as planned in their Student Education and Training Plans. Students in year 10 study seven subjects. Those that are compulsory include, English, Mathematics, a Science and History /Geography. Within the Studies program students undertake Work Experience and complete their Student Education and Training Plan. For full details of the subject offerings please refer to the Senior Subject Handbook.

Curriculum Overview – Year 10 – Key Learning Areas/Subjects

English
Mathematics <ul style="list-style-type: none"> • Mathematics - Extension • Mathematics • Mathematics - Foundation
Science <ul style="list-style-type: none"> • Science • Science Extension Program
Study Of Society and Environment <ul style="list-style-type: none"> • History • Geography
Language Other Than English <ul style="list-style-type: none"> • Chinese • Japanese
Health and Physical Education <ul style="list-style-type: none"> • Physical Education • Sport Specialisation – Track and Field
The Arts <ul style="list-style-type: none"> • Visual Art • Drama • Music • Media Studies
Business Technology <ul style="list-style-type: none"> • Information and Communication Technologies • Certificate I in Business • Introduction to Accounting
Home Economics Technology <ul style="list-style-type: none"> • Food Studies • Textiles • Food and Health
Industrial Technology <ul style="list-style-type: none"> • Graphics • Industrial Technology and Design • Industrial Technology - Manufacturing
English as a Second Language
Special Education Program
Other – Studies, Instrumental Music, Sport

Senior School – There is a broad range of Authority subjects offered that follow on from the Key Learning Areas studied in the Junior School curriculum. Tertiary links with the major universities and TAFE institutes offer extension programs with joint enrolment and add to the curriculum offerings. Authority Registered subjects complement our vocational education program and provide students with options for either continued tertiary study or articulation into vocational career paths and industry. Our traineeship/apprenticeship program has become one of the most comprehensive in the state. Students study six subjects, through provision can be made to study five subjects as well as undertake the traineeship program. Full details are found in the Senior Curriculum Handbook

Curriculum Overview Sunnybank State High School – Senior School

	Year 11 (Authority Non Authority)	Year 12 (Authority Non Authority)
English	English English for ESL Learners English Communication*	English English for ESL Learners English Communication*
Mathematics	Mathematics A Mathematics B Mathematics C <i>Pre Vocational Maths*</i>	Mathematics A Mathematics B Mathematics C <i>Pre Vocational Maths*</i>
Science	Physics Chemistry Biology Science in Practice Science/Maths Excellence Opportunities	Physics Chemistry Biology Science in Practice Science/Maths Excellence Opportunities
Humanities	Modern History Geography Legal Studies <i>Social and Community Studies</i>	Ancient History Geography Legal Studies <i>Social and Community Studies</i>
Language	Chinese French (Accelerated)	Chinese French (Accelerated)
Physical Education	Physical Education <i>Recreation Studies</i> <i>Sport Specialisation – Track and Field Certificate II in Sport Coaching</i>	Physical Education <i>Recreation Studies</i> <i>Sport Specialisation – Track and Field Certificate II in Sport Coaching</i>
The Arts	Visual Art Drama Music Film, Television & New Media <i>Drama Studies</i> <i>Music Studies</i> <i>Visual Art Studies</i>	Visual Art Drama Music Film, Television & New Media <i>Drama Studies</i> <i>Music Studies</i> <i>Visual Art Studies</i>
Business	Accounting Business Communication and Technologies Information Processing and Technology <i>Certificate II in Business</i> <i>Cert II in Information, Digital Media and Tech'y</i>	Accounting Business Communication and Technologies Business Organisation and Management Information Processing and Technology <i>Certificate II in Business</i> <i>Cert II in Information, Digital Media and Tech'y</i>
Technology Home Economics	<i>Early Childhood & Community Services*</i> <i>Hospitality*</i> <i>Tourism*</i> <i>Fashion</i> <i>Health Support Services</i>	<i>Early Childhood & Community Services*</i> <i>Hospitality*</i> <i>Tourism*</i> <i>Fashion</i> <i>Health Support Services</i>
Technology Industrial Arts	Graphics <i>Manufacturing- Industrial Technology Studies*</i> <i>Manufacturing – Build'g & Const'n Studies*</i>	Graphics <i>Manufacturing-Industrial Technology Studies*</i> <i>Manufacturing-Build'g & Const'n Studies*</i>
EALD	English as a Second Language program	English as a Second Language program
Special Education Program	Special Education Program	Special Education Program
Joint programs	Traineeships University/TAFE enrolment	Traineeships University/TAFE enrolment
Other	Studies	Studies
	Instrumental Music	Instrumental Music
	Interschool Sport and Social Sport	Interschool Sport and Social Sport
	Cultural Leaders	

Programs of Excellence / Extension – Sunnybank State High has a long standing Centre for Athletics Excellence, with athletes who have competed for Australia internationally and at the Olympics. A Science extension Program develops strong relationships with our local primary schools and our links with each of the Universities and the TAFE institutes in Brisbane provide extension work for students.

Opportunities exist for students to engage in extension activities in Science. Various topics and activities are offered throughout the year for each year level including:

Years 7 and 8 – RACI Crystal Growers, Thiess Engineering Challenge, Sunnybank Gardening group, Sunnybank Science Expo

Year 9 – RACI Crystal Growers, Thiess Engineering Challenge, Sunnybank Gardening group, Surfing Scientist Griffith University, Green Energy Lab Toohey Forest Education Centre, Science Expo.

Year 10 – Rio Tinto Science competition, RACI Crystal Growers, Thiess Engineering Challenge, Planetarium excursion, Unconventional Energy Expo (focus on engineering), Science Expo

Year 11 – University of Queensland Ambassador, RACI Chemistry competition, ICAS Science Competition, Griffith University Exercise Science and Health Program, Science Expo (leadership role)

Year 12 – Science Subject Captain, RACI Chemistry competition, ICAS Science competition, Titration competition, Science Expo (leadership role)

For more information about the programs please contact our Enrolments Officer who will refer you to the appropriate Head of Department.

Sunnybank Rewards Program – Sunnybank offers a rewards program for students who consistently perform above the average. Student results are considered at the end of each semester to determine those who have achieved As, Bs and no more than two Cs. Recognition of this achievement is in the form of certificates, assemblies and excursions to locations where extension work can be undertaken such as the universities or places where further practical applications of programs are explored such as outdoor education challenges..

Learning Support: Our Intensive English Language Centre and International Student Program support students from non-English speaking backgrounds. Bi-lingual teacher aides are also employed by the school to assist in developing partnerships with parents and the community.

Sunnybank High School offers a corrective reading program and a focused literacy program for students who are identified as requiring additional support in reading. Additional intensive mathematics classes are offered for Indigenous students and maths tutoring is provided during lunch times for any students who wish to access this program.

Modifications and adjustments for students with disabilities are coordinated through the SEP with students accessing both individualised and mainstreamed programs.

Student Leadership: Students are encouraged to develop their leadership potential through a range of activities undertaken in House and Year levels. Each year level selects student leaders who undertake a range of leadership roles in the school including representing the school at community events, fund raising, sports coordination and leadership, community representation, cultural leadership, interclass activities and operating the Student Council which provides students with a forum and voice in the school. It is recognised that all students are leaders at various times in their school life and when enrolled at Sunnybank have the responsibility to represent our school each day within their various activities.

Multicultures: Links with our local community organisations have been strengthened through the Multicultures Project a joint Brisbane City Council, PCYC and Sunnybank SHS initiative. This program encompasses a range of activities including the following:

- Cultural Leaders
- Streetwise
- Acting 4 Community
- Parent Forums

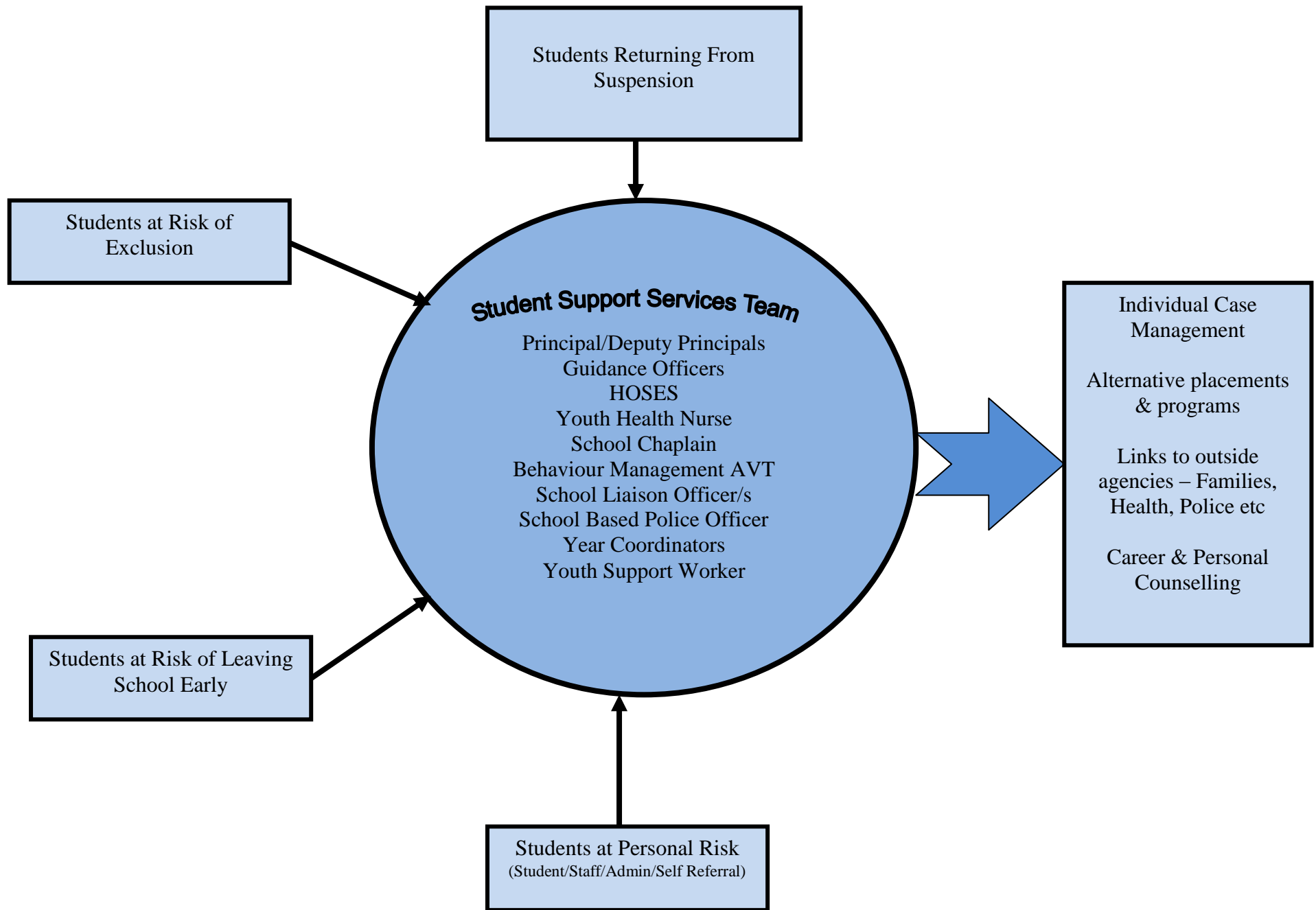
Student Support Services

A team of staff including the Guidance Officers, School Based Youth Health Nurse, Chaplain, School Based Police Officer, AVT Behaviour support, Cultural Liaison Workers and Youth Support Co-ordinators meet on a weekly basis to discuss and plan strategies for students identified as requiring intervention. When appropriate, referrals are made to outside agencies for intensive support.

STUDENT EXTENSION/SUPPORT PROGRAMS

FOCUS	YEAR 7	YEAR 8	YEAR 9	YEAR 10	YEAR 11	YEAR 12
CURRICULUM	Learning Support <ul style="list-style-type: none"> • Literacy • Numeracy • ESL/SEP Tutors • Corrective Reading • Focused Literacy • Maths tutoring • Turbo time 	Learning Support <ul style="list-style-type: none"> • Literacy • Numeracy • ESL/SEP Tutors • Corrective Reading • Focused Literacy • Maths tutoring • Turbo Time 	Learning Support <ul style="list-style-type: none"> • Literacy • Numeracy • ESL/SEP/Tutors • Corrective Reading • Focused Literacy • Maths Tutoring 	Subject reselect <ul style="list-style-type: none"> • Consolidation • Extension Learning Support <ul style="list-style-type: none"> • Literacy • Numeracy • ESL/SEP/Tutors • Corrective Reading • Maths Tutoring Work Experience	Appropriate subject selection TAFE/Uni links Traineeships Apprenticeships Joint enrolment Uni/TAFE Learning Support ESL/SEP	Appropriate subject selection TAFE/Uni links Traineeship Apprenticeship Joint enrolment Uni/TAFE Learning Support ESL/SEP
	Rewards Program	Rewards Program	Rewards Program	Rewards Program	Rewards Program	Rewards Program
STUDENT LEADERSHIP	Year 7 student Council	Year 8 Student Council	Year 9 Student Council Citizenship focus	Year 10 Student Council Citizenship focus Buddies	Year 11 Student Council Citizenship focus Buddies	Year 12 Student Council Citizenship focus Buddies
	Transition activities	Orientation Camp			Camp Multicultural Leaders	Leadership days/conferences
	Whole of School Student Council					
BEHAVIOUR/ SOCIAL	Motivational Speakers Orientation Buddy Program ESL Programs	Motivational Speakers Orientation Anti Bully Program Buddy Program ESL Programs	Motivational Speakers Streetwise ESL Programs	Motivational Speakers Streetwise Buddy Program	Motivational Speakers Multicultural Leaders Buddy Program	Motivational Speakers Senior Leaders
	YMCA Mentor Program					

STUDENT SERVICES TASK GROUP
 Principal/Deputy Principal
 Guidance Officer (Co-ordinator)
 Youth Health Nurse
 School Chaplain
 School Based Police Officer
 School Liaison Officer
 Youth Support Coordinator



Professional Development

Professional Development for curriculum implementation is supported through Head of Department recommendation.

QSA and curriculum professional development is the primary focus along with other programs that underpin the annual school or faculty goals.

School wide Positive Behaviour Support has been embedded since 2011 and other topics identified by staff are supported.

On line PD details will be disseminated when they are made available each term.

Sport coaching professional development opportunities through community organisations will be made available.